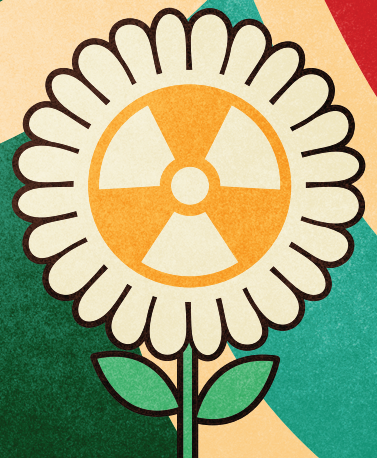


Peace, Love & RAD

Radiology Pursuit



Instructions

1. Gather your team and separate into groups.
2. Select a host to read each question.
3. Provide each team with a dry-erase board or pieces of paper and a pen.
4. After the question is asked, the team who records the correct answer first will receive the points.
 - a. Each question is worth 5 points.
5. Points will be tallied at the end of the game. The team with the most points – wins!
 - a. The host will ask a tiebreaker question in the event of a tie.

Trivia Questions

- 1. X-ray has been around for a long time; in what year was it discovered?**
 - a. 1800
 - b. 1895
 - c. 1900
 - d. 1925
- 2. True or False:** X-rays have been used in art to examine paintings.
- 3. Who discovered and developed X-rays?**
 - a. Wilhelm Roentgen
 - b. Marie Curie
 - c. Winston Churchill
 - d. Godfrey Hounsfield
- 4. In what decade did radiation therapy become a specialized field?**
 - a. 1930s
 - b. 1940s
 - c. 1950s
 - d. 1960s
- 5. On average, how many MRI scans are performed each year?**
 - a. Over 10 million
 - b. Over 17 million
 - c. Over 37 million
 - d. Over 56 million
- 6. True or False:** NASA uses a giant X-ray called Chandra to take images of outer space.
- 7. What band is largely attributed with spurring development of the CT scanner?**
 - a. Backstreet Boys
 - b. U2
 - c. The Beatles
 - d. Nirvana

Trivia Questions

8. **True or False:** Specialists in fields such as surgery, orthopedics, vascular surgery and cardiology use a D-arm for intraoperative imaging.
9. **Who invented tomography to use radiographic film to see a single slice of the body?**
- a. Alessandro Vallebona
 - b. Mathias Prokop
 - c. Godfrey Hounsfield
 - d. Queen Elizabeth
10. **In what city was the first CT scan performed?**
- a. London
 - b. Wimbledon
 - c. Liverpool
 - d. Paris
11. **In 2021 Siemens Healthineers introduced the world's first _____ .**
- a. 4D ultrasound
 - b. Photon-counting CT system
 - c. Mobile X-ray
 - d. Mobile C-arm
12. **What percentage of women diagnosed with breast cancer have no family history of the disease?**
- a. 20%
 - b. 35%
 - c. 50%
 - d. 75%

Trivia Questions

13. At what age do the American College of Radiology and the Society of Breast Imaging recommend that women receive annual mammograms?

- a. 25 years old
- b. 30 years old
- c. 40 years old
- d. 55 years old

14. What is breast density?

- a. A measure of how much muscle is in the breast
- b. A measure of how much fibrous and glandular tissue in the breast
- c. A measure of breast size
- d. A measure of the firmness of the breast

15. What are radiotracers?

- a. Small amounts of radioactive materials are typically injected into the bloodstream, inhaled or swallowed
- b. Electrolytes in water
- c. Sodium iodide for use with thyroid patients
- d. Artificial radionuclide, phosphorus-32, used to treat leukemia

16. Who discovered the technique that underlies Functional MRI (fMRI)?

- a. Mona Lisa
- b. Raymond Damadian
- c. Seiji Ogawa
- d. Isidor Rabi

17. True or False: Children are not allowed to undergo nuclear medicine procedures.

18. What imaging system is typically used when looking for a brain injury or skull fracture?

- a. MRI
- b. CT
- c. X-ray
- d. C-arm

Trivia Questions

19. What is CT contrast typically made of?

- a. Iodine-based
- b. Gadolinium
- c. Barium-sulfate
- d. Saline

20. Approximately how many MRI systems are in the United States?

- a. 10,000
- b. 12,000
- c. 15,000
- d. 20,000

Tiebreaker

1. The strength of the magnetic field in MRI is rated using a unit measurement known as what?

- a. Tesla
- b. Radio waves
- c. Nuclear magnetic resonance
- d. Super strength

Sources:

- ASRT
<https://www.asrt.org/promotions/centennial/>
- The Art Institute of Chicago
<https://www.artic.edu/articles/949/x-rays-peering-over-the-artist-s-shoulder>
- Harvard-Smithsonian Center for Astrophysics
https://chandra.harvard.edu/about/axaf_mission.html#:~:text=NASA's%20Chandra%20X%20ray%20observatory%20built%20to%20date.
- CDC
https://www.cdc.gov/nceh/radiation/nuclear_medicine.htm
- Cincinnati Children's
<https://radiologyblog.cincinnatichildrens.org/five-facts-ct/>
- Radiologyinfo.org
<https://www.radiologyinfo.org/en/info/safety-contrast#:~:text=Iodine%2Dbased%20and%20Gadolinium%2Dbased,the%20arteries%20during%20angiogram%20procedures>
- National Library of Medicine
<https://www.ncbi.nlm.nih.gov/pmc/articles/PMC4337127/>
- Siemens Healthineers
<https://www.medmuseum.siemens-healthineers.com/en/stories-from-the-museum/history-mammography>
- International Society of Computed Tomography
<https://www.isct.org/computed-tomography-blog/2017/2/10/half-a-century-in-ct-how-computed-tomography-has-evolved>
- Science Learning Hub
<https://www.sciencelearn.org.nz/resources/1906-developments-in-medical-imaging-timeline>
- Mayo Clinic
<https://www.mayoclinic.org/tests-procedures/ct-scan/about/pac-20393675#targetText=A%20computerized%20tomography%20>
- American Registry of Magnetic Resonance Imaging Technologists
<https://www.armrit.org/about.php>
- The American Institute of Medical Sciences and Education
<https://aimseducation.edu/blog/the-evolution-of-mri-imaging-equipment>
- Electronic Component New (ECN)
<https://www.envrad.com/facts-about-mris/>
- National Library of Medicine
<https://www.ncbi.nlm.nih.gov/pmc/articles/PMC6295297/>
- Siemens Healthineers
<https://www.ncbi.nlm.nih.gov/pmc/articles/PMC6295297/>

Answers:
1. b
2. true
3. a
4. d
5. c
6. true
7. c
8. false
9. a
10. b
11. b
12. d
13. c
14. b
15. a
16. c
17. false
18. b
19. a
20. b
The Breaker
21. a